

Patent Pending

DESCRIPTION

Radiant Communications is pleased to announce our latest innovation for head-end consolidation, our PC Vision Software video management system.

Remotely monitor your entire channel lineup over the existing LAN/WAN, VPN or internet connection.

The RMI 100 series enables transmission of high quality video signals over existing IP networks. This is an extremely flexible system with a number of features, including up to four selectable video inputs (only one can be viewed at a time).

At any time multiple locations can view the audio and video stream on a PC with the Radiant PC Vision software.

This management system is designed to be scaleable not only on the network but will continue to grow over time with additional features and benefits designed to save each system money as well as system downtime while increasing your companies ability to quickly react to problems and resolve issues which results in better customer satisfaction and retention.

▶ RMI 100 PC Vision Software Video management system

BENEFITS

Network efficient:

Scaleable bandwidth options with MPEG-4.
Real-time efficient streaming video -30 FPS

Cost Savings:

Reduce Truck Rolls - remote problem verification.
Check and sample real time VOD and PPV stream
Expandable, at any time easily add locations.
One year of free software upgrades.

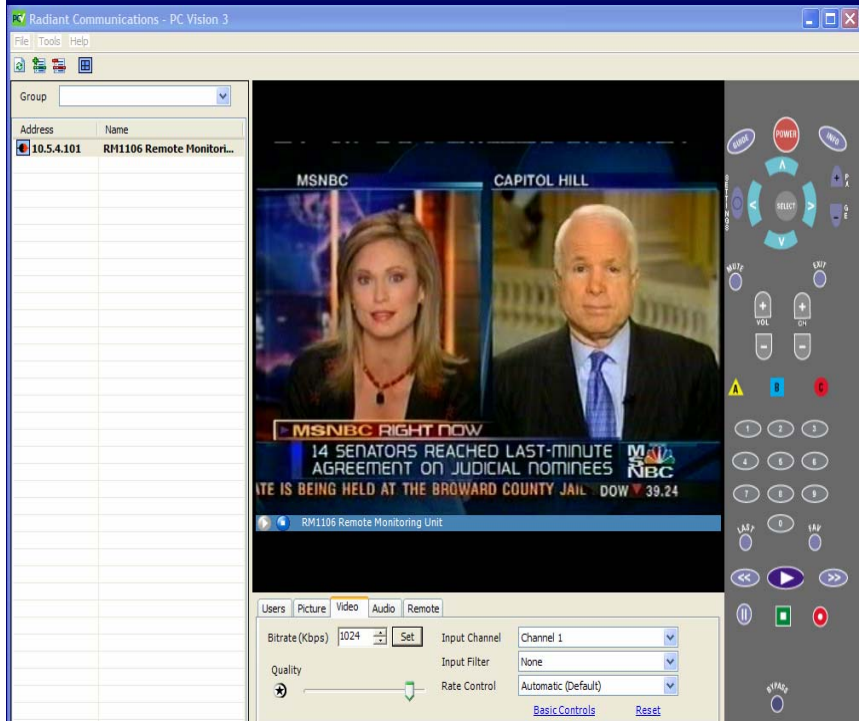
Applications:

View channel lineup with existing LAN/WAN.
Monitor Ad sales channels from multiple Ad zones
Verify Ad Tag or Ad Copy from different zones.
Monitor multiple hub locations at one time.
Remote diagnostics from cable box.
Remote troubleshooting.

FEATURES

Multifunction network appliance.

One (1) IP address per location.
Small footprint—system in 1u high rackmount unit.
Troubleshoot channel lineup at remote location.
Multiple viewers (3) at one time of same stream.
Multiprotocol— UDP, TCP, RTP
Capable of functions other than audio and video.



**Radiant
Communications
Corporation**

Phone: 908 757 7444 or 800 969 3427
Fax: 908 757 8666
E-mail: sales@rccfiber.com
www.rccfiber.com

P.O. Box 867
South Plainfield
NJ 07080
USA

5/2005

▶ RMI 100 PC Vision video management system

Features	Version 2.5	Version 3.0 (Q3-2005)
Remotely monitor entire channel lineup using converter box via existing LAN/WAN in real-time.	X	X
Multiple Views—Monitor up to 4 remote locations from anywhere on your network at one time	X	X
Adjustable bandwidth settings - selectable from 64 kbps to 2000 Kbps.	X	X
PC Vision software included with each RM1100 Unit—additional software licenses available.	X	X
Picture, Quality and Audio Controls—check audio differential between channels	X	X
Time Out feature –allows unit to be turned off when not being viewed. Uses bandwidth only when necessary.	X	X
User selectable synchronized audio	X	X
Web updates for Remote Control IR Codes. Update software for new remotes locally.	X	X
Display of users currently logged into unit.	X	X
Text messaging between users while online.	X	X
Administrative program to setup and manage all RM1100 devices on your network.	X	X
Live network status monitoring . Displays current network status in real-time.	X	X
Universal remote custom programmed for your converter boxes as well as standard remotes.	X	X
Customizable remote control. Allows you to select different remote features for cable boxes.	X	X
User selectable IP address, Subnet Mask, Gateway with DHCP Capability	X	X
Multiple viewers — Up to 3 viewers at one time to access same IP stream.	X	X
Allow users to request control of remote from other current users	X	X
Three (3) additional video inputs available - for security or other cameras (option)	X	X
Three (3) User levels with password administration—Add and manage users to give password-protected access to certain features. For example, a CSR may be able to view certain locations but only a technician can put the converter box in a diagnostic mode. Users will be able to view all what others are watching but will not have control of converter box.	X	X
Channel Matrix - Allows Multiple units to be tuned to the same channel with one button.	X	X
Diagnostic Key. You can easily select multiple buttons to bring up display.	X	X
Selectable Protocols—RTP, TCP or UDP.	X	X
Server version. Units capable or running in local or server mode.		X
Fail over capability—pier to pier and server to server.		X
Recording. Record video for later analysis. Will require a separate server for this feature.		X
System Diagnostics—Self reporting error messaging.		X
Connect and run 3rd Party applications and devices.		X
Greatly enhanced connection time.		X

ORDERING INFORMATION

RMI 100—SL Software License
Notes: 1. Package of 10 Licenses



**Radiant
Communications
Corporation**

Phone: 908 757 7444 or 800 969 3427
Fax: 908 757 8666
E-mail: sales@rccfiber.com
www.rccfiber.com

P.O. Box 867
South Plainfield
NJ 07080
USA

5/2005