

ONMS

Metro network monitoring solution

- Effective, easy to use monitoring system for metro networks
- Complete service offering and system for operating and maintaining fiber optic networks
- 24/7 monitoring system
- Detailed documentation of fiber optic networks based on geographical maps
- Update of documentation with field measurements

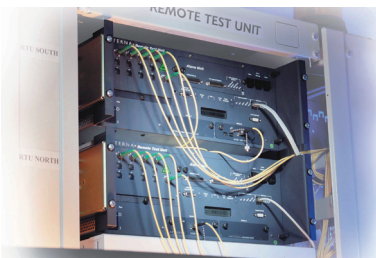


Detailed documentation that is easy to use and maintain

Metro networks have high fiber density where connections are frequently modified making up-to-date documentation tools essential for operators who run these networks.

Documentation – whether in paper or electronic drawing form – although detailed, is not suitable when frequent updates need to be made. Once created by a designer, the documentation is modified by installers who provide the as built documentation. During operation and maintenance (O&M), documentation is not regularly updated as the applications used by the designer are at this point not available to O&M technicians. JDSU's solution, which runs on the ONMS Optical Network Monitoring System, allows the same tools to be used from the design process through to O&M, thus making any modifications quick and easy to carry out.

With JDSU's solution, documentation like data and maps are stored in a relational database thus offering the advantage of retrieving on demand any information (for example fiber route maps, distribution panel graphics, OTDR traces, and data that supports elements) regarding the network. The relational database, which is based on a geographical information system (GIS), enables linkage to any element within the network so that the user can navigate through the entire network from within the geographical map.



ONMS – Optical Network Management System



24/7 pro-active maintenance and fast fault location

The monitoring system is able to accurately localize fiber optic deterioration within seconds 24 hours a day, seven days a week. Sensitive enough to detect even the slightest variation, deterioration can be identified before it affects service.

Even with cable cuts, precise fault location is given within seconds so that measures, such as warnings and back-up procedures, can be taken to minimize the consequences for network users.

Monitoring system performance depends on the performance of OTDR measurements. The JDSU monitoring system uses OTDRs identical to those in portable units such as the JDSU MTS-5000^o Series Media Test Sets.

For city networks, distance accuracy is a key parameter. An error of 100 meters can have disastrous consequences on the time to repair or evaluate the faults.

Only monitoring systems with GIS-based documentation can provide the high level of accuracy needed.

Complete system

JDSU's network documentation and monitoring systems are offered as a single solution system to bring real economical benefits for operating and maintaining networks. This has the advantage of linking both documentation and field measurements to provide a clear and accurate account of resources available for use.

The system is also flexible enough to perform correlation of fiber deterioration and detected faults with geographical location or possible impact on services and users.

Real-time network status information for users

Customers of dark fiber providers can be informed in real time of the status of leased fibers -- a factor that is essential when identifying the source of network problems. JDSU's solution addresses this issue by offering users the ability to check in real time the status of leased fibers via web browser.

Scalable system

Some of the world's largest long distance and access network operators rely on JDSU's network management systems. And JDSU's metro network solution is derived from these systems. Employing identical software and hardware, the metro solution is scalable for upgrade to larger systems or to new technologies such as dense wavelength division multiplexing (DWDM). The solution is also flexible enough to integrate currently existing or legacy documentation.

Features

- Complete outside plant documentation
- Geographical information system (GIS)
- On duty calendar
- Web Browser access
- Performance reports
- Wide range of OTDRs
- DWDM monitoring
- Comprehensive service offering

Test & Measurement Regional Sales

NORTH AMERICA TOLL FREE: 866 228 3762 FAX: 301 353 9216	LATIN AMERICA TEL: +55 11 5503 3800 FAX: +55 11 5505 1598	ASIA PACIFIC TEL: +852 2892 0990 FAX: +852 2892 0770	EMEA TEL: +49 7121 86 2222 FAX: +49 7121 86 1222	WEBSITE: www.jdsu.com
---	---	--	--	---